



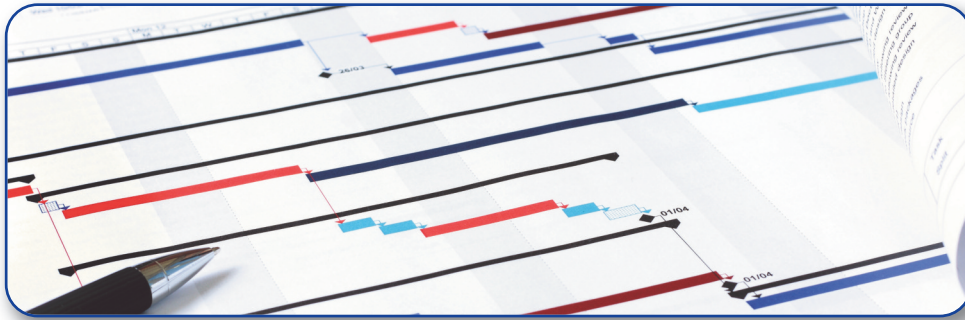
The **TURNER & COATES** Global Examiner

Running the rule over international business

since 1880

Issue 5-Mar-16

Everything comes under the microscope



AS many of our regular, established customers will already know, Turner & Coates is unfailingly committed to going that extra mile in order to meet and surpass a client brief.

Moreover, we routinely leave no stone unturned when providing a level of service and attention to detail that, we believe, is unrivalled anywhere in the global Inspection & Expediting industry.

A clear and perfect example of our all-encompassing approach to delivering up-to-the-minute information, data and

analysis to our customers, lies in the unparalleled standard of our client reports.

So much more than just a box-ticking exercise, our detailed and thorough Inspection & Expediting reports present an extensive investigation into all the essential facts, figures and testing results relating to the current status of international suppliers and manufacturers, wherever they are located.

The in-depth approach we typically employ in this key area not only reduces the scope for confusion, error and

misinformation, but it also helps us to drive the supplier or manufacturer concerned into meeting deadlines and project specifications, with the maximum possible accuracy and efficiency.

Everything is analysed and evaluated from a platform of comprehensive knowledge and systematic understanding of the myriad different industries in which we operate, from petro-chemicals to pulp and paper manufacturing.

Furthermore, each report we collate, produce and submit is detailed, exact and consistent with the inspection and/or expediting visit in question. All reports are illustrated and annotated by detailed equipment manufacturing photographs, to give customers the complete picture.

Finally, everything is written up in a concise, clearly presented format using the plainest, most jargon-free language possible, and reinforced by a full breakdown of required actions for both the client and supplier to follow.

In the spotlight

OUR growing presence in China has been, in no small part, facilitated by the experienced guiding hand of inspection engineer and auditing professional, Ben Tang (pictured right).

Based near to the city of Yangzhou in Jiangsu Province (located on China's east coast), Ben possesses an enviable industry pedigree, a vast amount of Inspection & Expediting knowledge and considerable auditing, Quality Assurance and supplier evaluation expertise, particularly in the fields of Oil, Gas and Pulp & Paper manufacture.

A Master of Science with a raft of industry-relevant qualifications to his



A man of letters: Inspector, Expeditor and Quality Auditor, Ben Tang.

name - such as ISO 9001 Lead Auditor, a Comprehensive Level award from the International Institute of Welding, Senior IWI (International Welding Inspector), NACE CIP Level 2 and a UT Level 2 qualification from the Chinese Society

for Non-destructive Testing - Ben is a fluent English speaker who has worked with Turner & Coates for the past five years.

From his base in Yangzhou, Ben heads up our team in China, providing technical support to our engineers on single-day assignments, or residencies. We are delighted to retain his expert services, as he is such a diligent and dedicated industry professional with a meticulous attention to detail.

Outside of his day-to-day duties, Ben is an avid walker who also holds a long-standing passion for Chinese calligraphy. He regularly practises this ancient discipline, and produces high quality work using traditional bamboo ink brushes.

For total inspection, expediting and management systems implementation and auditing solutions, a FREE copy of our brochure or a no-obligation quote, call now on 0161 660 8656 (within UK) or +1 (404) 462-5729/ +1 (610) 707-1396 (from North America)!*



Technology House, Lissadel Street, Salford, M6 6AP, UK, Tel: +44 (0)161 660 8656, www.turnerandcoates.com, Email: info@turnerandcoates.com

* Calls on our dedicated North American numbers can be made until 12 noon EST